

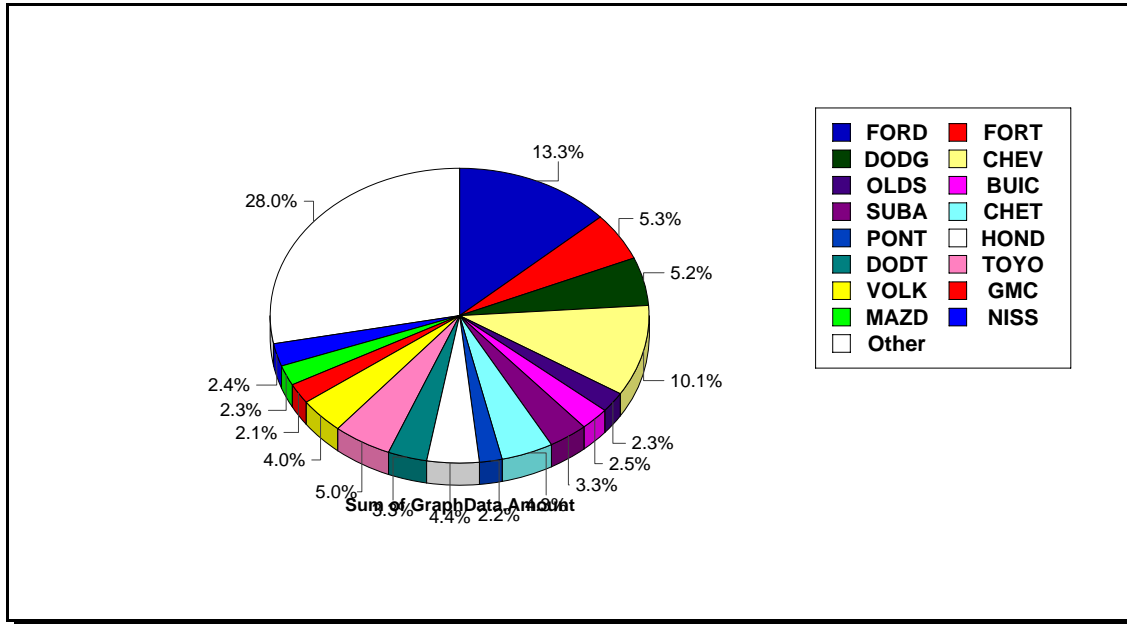
Total Quality Consulting, Inc.

PO Box 969
Whitefish, MT 59937
(406) 862-8023

Marketing Report

Vehicle Make

Printed on 10/19/2007 at 12:37:49PM



Vehicle Make	Count	Percent	Vehicle Make	Count	Percent
FORD	895	13.26 %	GEO	52	0.77 %
CHEV	681	10.09 %	LINC	47	0.70 %
FORT	358	5.31 %	BMW	45	0.67 %
DODG	351	5.20 %	ACUR	43	0.64 %
TOYO	335	4.96 %	AUDI	39	0.58 %
HOND	298	4.42 %	HYUN	37	0.55 %
CHET	293	4.34 %		35	0.52 %
VOLK	270	4.00 %	SAAB	35	0.52 %
SUBA	225	3.33 %	NIST	34	0.50 %
DODT	223	3.30 %	ANY	33	0.49 %
BUIC	167	2.47 %	SATU	32	0.47 %
NISS	165	2.45 %	ISUZ	31	0.46 %
MAZD	155	2.30 %	MAZT	30	0.44 %
OLDS	152	2.25 %	PLYT	29	0.43 %
PONT	146	2.16 %	ISUT	23	0.34 %
GMC	144	2.13 %	EAGL	21	0.31 %
CHRY	133	1.97 %	DATS	21	0.31 %
TOYT	125	1.85 %	SUZU	21	0.31 %
MERC	124	1.84 %	KIA	19	0.28 %
JEEP	109	1.62 %	AMC	18	0.27 %
AMCT	106	1.57 %	MERB	17	0.25 %
PLYM	102	1.51 %	SUBT	15	0.22 %
CADI	99	1.47 %	MITT	14	0.21 %
GMCT	74	1.10 %	SUZT	12	0.18 %
VOLV	61	0.90 %	IHC	11	0.16 %
MITS	58	0.86 %	MERT	10	0.15 %

Vehicle Make	Count	Percent
VOLT	10	0.15 %
OLDT	9	0.13 %
LEXU	9	0.13 %
KIAT	9	0.13 %
BOAT	8	0.12 %
WINN	8	0.12 %
JAGU	8	0.12 %
CHRT	7	0.10 %
PORS	7	0.10 %
INFI	6	0.09 %
GEOT	5	0.07 %
HONT	5	0.07 %
MG	4	0.06 %
SOUT	4	0.06 %
TRIU	4	0.06 %
INTE	4	0.06 %
LINT	4	0.06 %
P AR	3	0.04 %
STUD	3	0.04 %
ALFA	3	0.04 %
DAEW	3	0.04 %
DAIH	2	0.03 %
ITAS	2	0.03 %
FIAT	2	0.03 %
LAND	2	0.03 %
RENA	2	0.03 %
WILL	2	0.03 %
DAMO	2	0.03 %
IHCT	2	0.03 %
FORK	2	0.03 %
MINI	2	0.03 %
POTT	2	0.03 %
FRHT	1	0.01 %
NASH	1	0.01 %
COLU	1	0.01 %
HOLI	1	0.01 %
HICH	1	0.01 %
BUS	1	0.01 %
Tech	1	0.01 %
COBR	1	0.01 %
ROAD	1	0.01 %
KENW	1	0.01 %
SPAR	1	0.01 %
DELO	1	0.01 %
MERK	1	0.01 %
BERT	1	0.01 %
AM G	1	0.01 %
BUIT	1	0.01 %
LANT	1	0.01 %
AUST	1	0.01 %
FREI	1	0.01 %
ALEG	1	0.01 %
* FO	1	0.01 %
TRAI	1	0.01 %
INFT	1	0.01 %

Vehicle Make	Count	Percent
MOTO	1	0.01 %
BMWT	1	0.01 %
KOBO	1	0.01 %
KODI	1	0.01 %
METT	1	0.01 %
AMER	1	0.01 %
RAMB	1	0.01 %